



Trenchless Pipe Rehabilitation

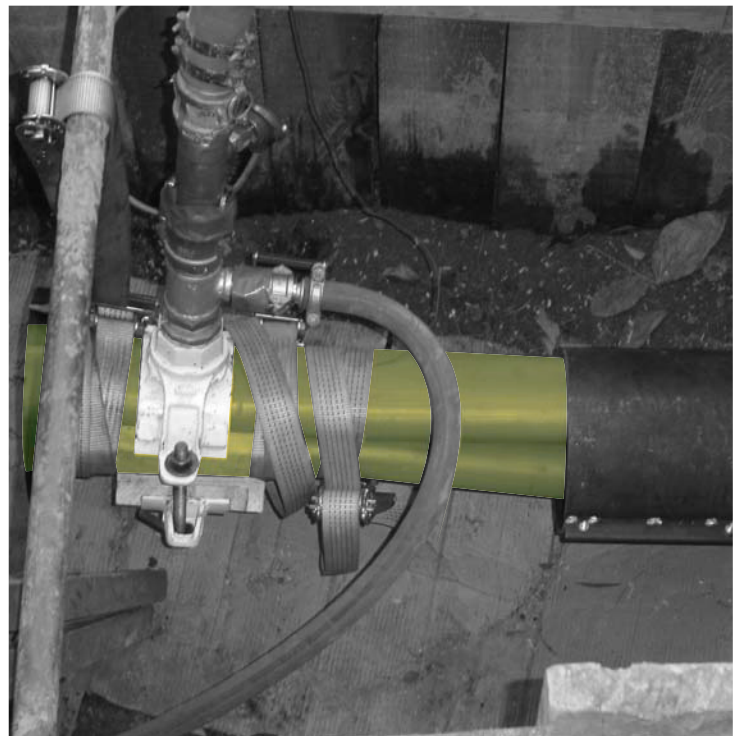
Today's contribution for future generations.

'us' – Utility Services offers a new and innovative solution to all of your water, sewer, gas and industrial pipelines made of traditional materials such as cast iron, steel, concrete, clay or asbestos-cement. The close-fit technique offers a structurally independent pipe with the quality and durability of a newly installed pipe.

Pipe diameters range from 100mm to 500mm and rehabilitation applies for both pressure and non-pressure applications. Especially advantageous if the pipeline is not accessible or in heavy traffic areas where open trench construction is not possible.

Our rehabilitation technology solves many problems and introduces significant benefits, including:

- High quality close-fit renovation
- Cost effective, reduced installation time
- Minimal disruption
- Universal use
- Reduce OHS&E issues dramatically
- Applicable to all pipe materials
- Lower drag, better flow efficiency
- Makes road openings redundant
- No risk to other authorities assets



Features and Benefits

The outcome is a pipe in a pipe, giving:

- Quality and durability of a new installation
- Lower cost than direct replacement
- Long length with reduced work areas
- Little impact on environment and community

Consider pipe rehabilitation as a commercial, environmental and communal contribution, made possible through innovative delivery. Networks become reliable, safe and long-lasting for many years ahead.

To find out more about our Pipe Rehabilitation please contact:

'us' - Utility Services
20 Corporate Drive
Heatherton, Victoria 3202
Australia

Phone: +61 (0)3 9552 3007 Fax: +61 (0)3 9552 3008
Email: info@usus.com.au Web: www.usus.com.au